



S Cloverdale St: Pedestrian Enhancement Project

Early Community Check-In

Our vision, mission, and core values

Vision: Seattle is a thriving equitable community powered by dependable transportation

Mission: to deliver a transportation system that provides safe and affordable access to places and opportunities

Committed to **6 core values:**

- Equity
- Safety
- Mobility
- Sustainability
- Livability
- Excellence

Presentation Overview

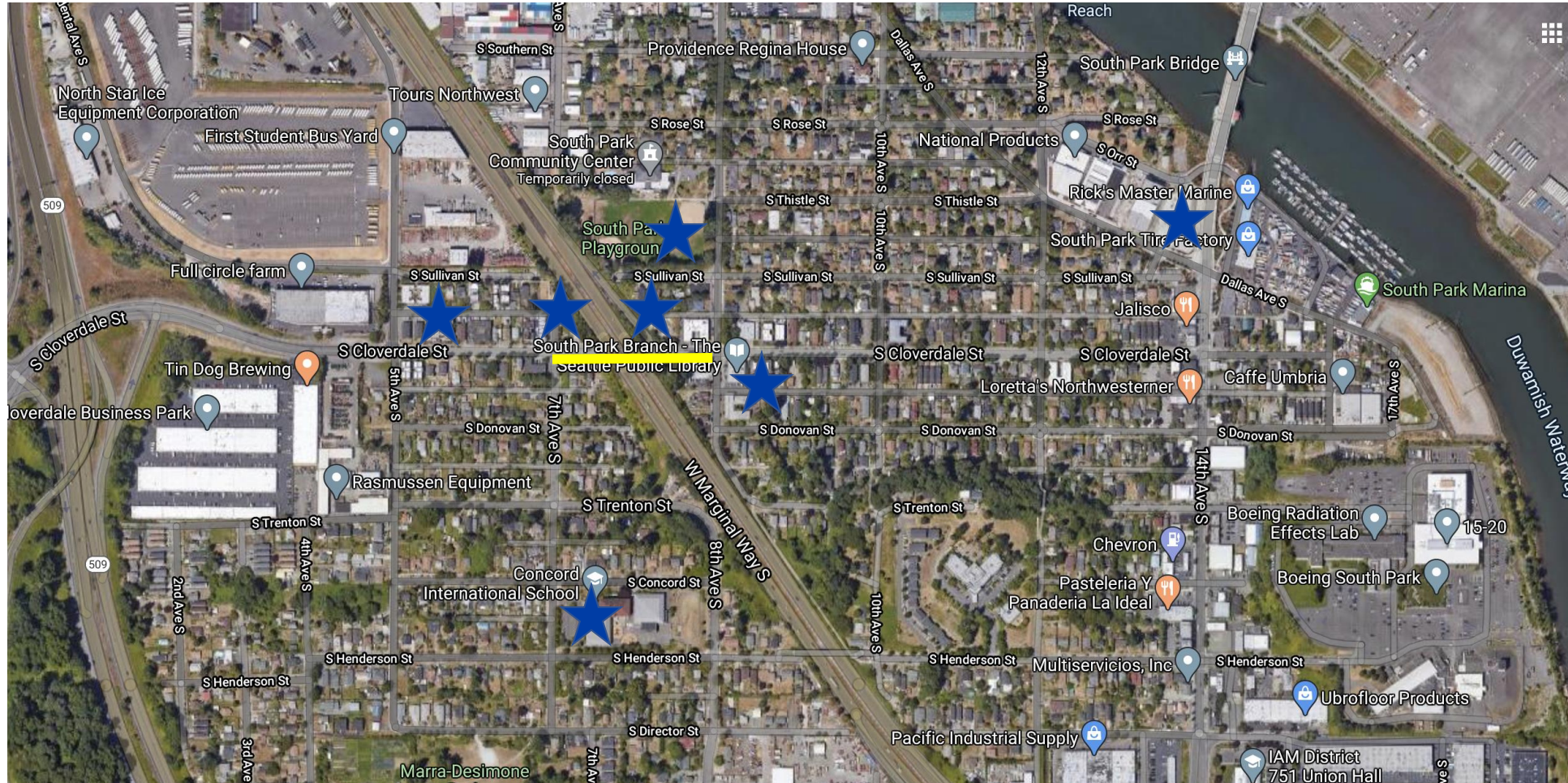
Follow Up from May 19 DVSS meeting

1. Project area
2. Background
3. Existing conditions
4. Opportunities
5. Draft Concepts
6. Discussion
7. Next Steps

Follow-up from May 19 DVSS meeting

1. Update on SR 99 lighting - Implementation in July 2020
 2. 14th and Cloverdale Project - Implementation over Summer 2020
 3. Question about Stay Healthy Streets
 4. Question about tree planting and air quality
 5. Interest in SDOT briefing Georgetown community
- } Have been shared with West Seattle Bridge Team for inclusion into West Seattle Task Force project prioritization list/plan
6. Interest in School Zone Speed Camera on 8th and Cloverdale – can be considered in city prioritization in 2021, will also add to West Seattle Task Force project prioritization

Project area



Background

- 2018 YVYC project
- 8th Ave Signal rebuild and timing adjustment - completed
- New crosswalk at 12th Ave S - completed
- Lighting under the SR 99 underpass – to be installed in July 2020



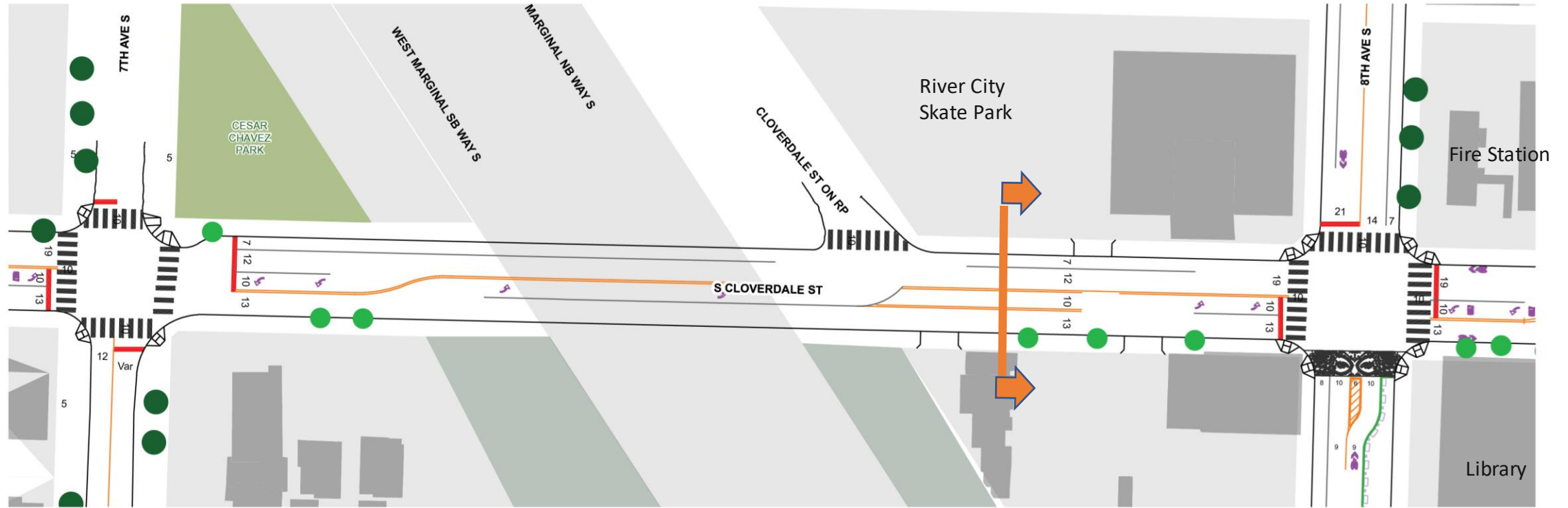
Background

- Project priority is pedestrian safety
- Important pedestrian connection between community destinations, parks, and school
- Major Freight Street, Frequent Transit Network, and Seattle Fire Primary Response Route
- On Ramp to NB SR 99
- SPU mains under turn lane
- \$500k Construction Budget + \$90k YVYC Design Budget

What we have heard:

- Concerns about increases in cut-through and speeding traffic
- Lack of buffer from traffic
- Need for
 - safer pedestrian crossings
 - wider walking areas
 - additional pedestrian lighting

Existing conditions

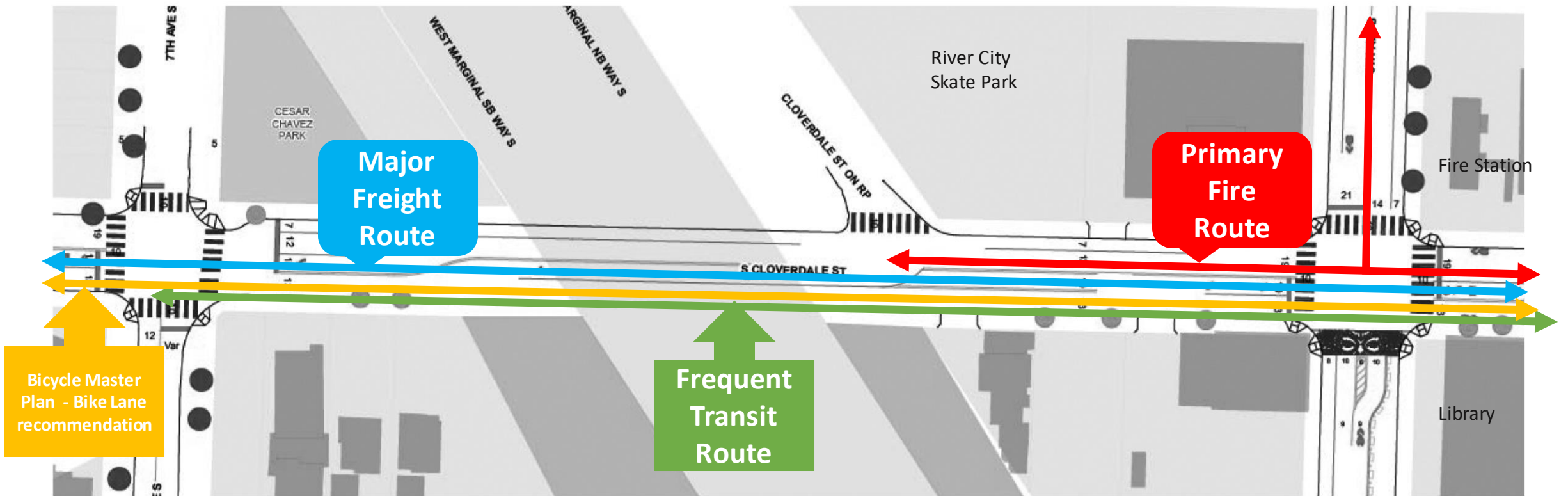


SDOT Trees

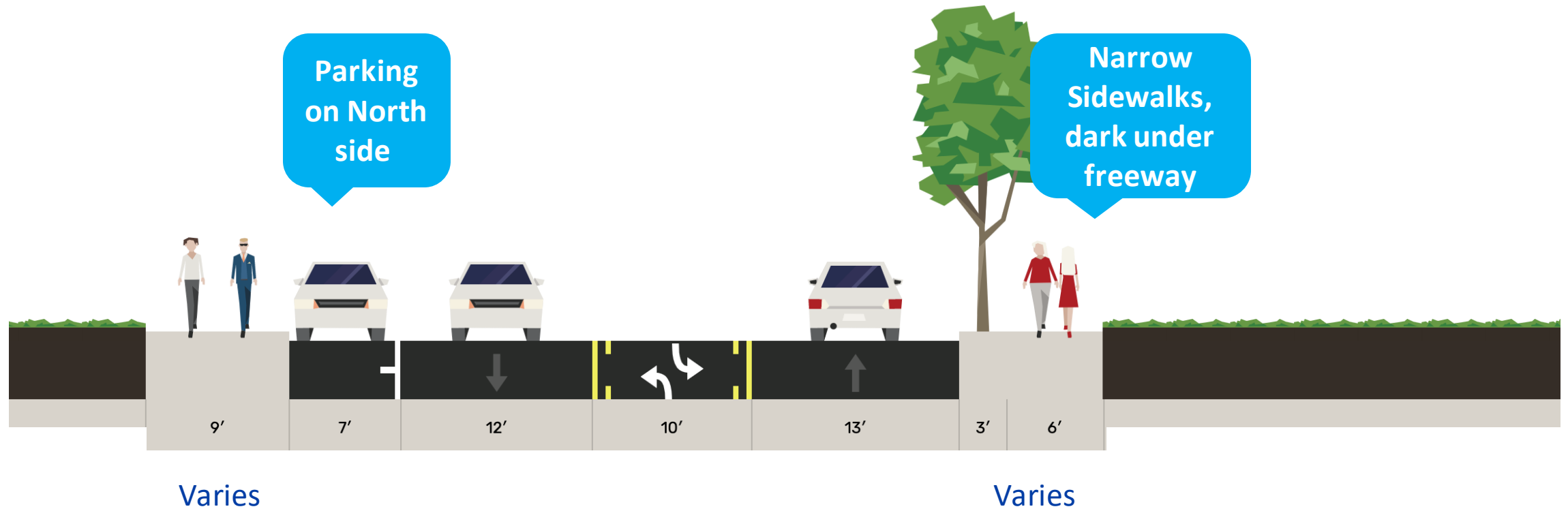


Private Trees

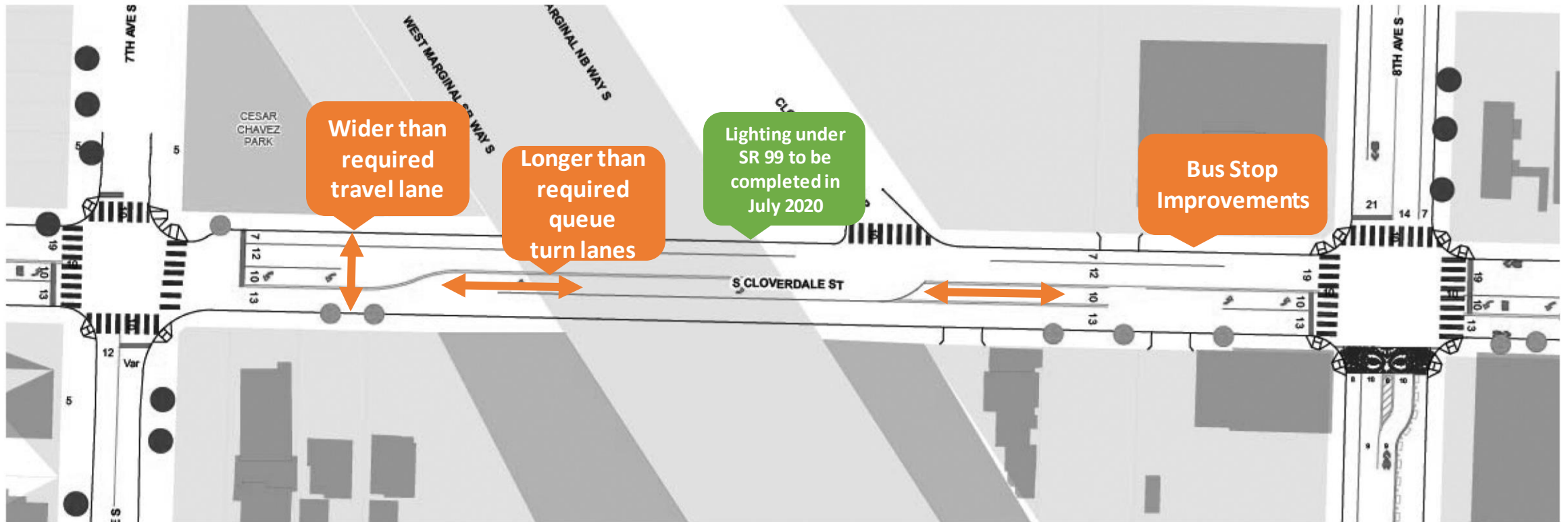
Existing Conditions



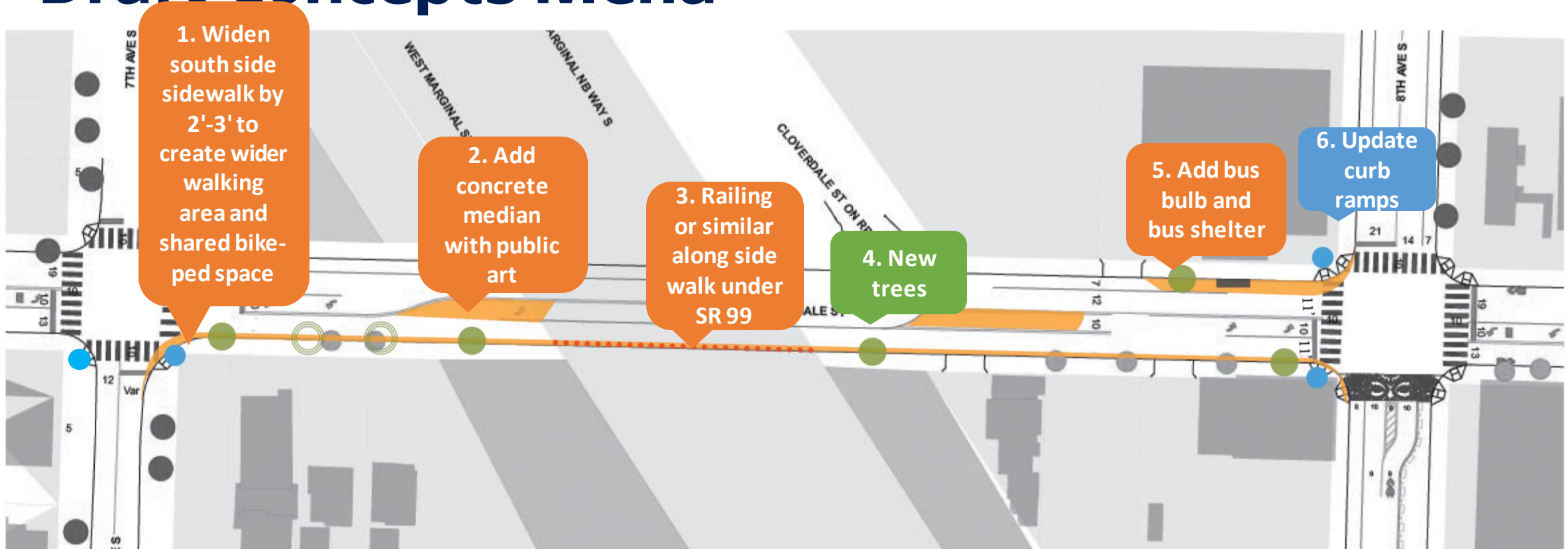
Existing - Looking East



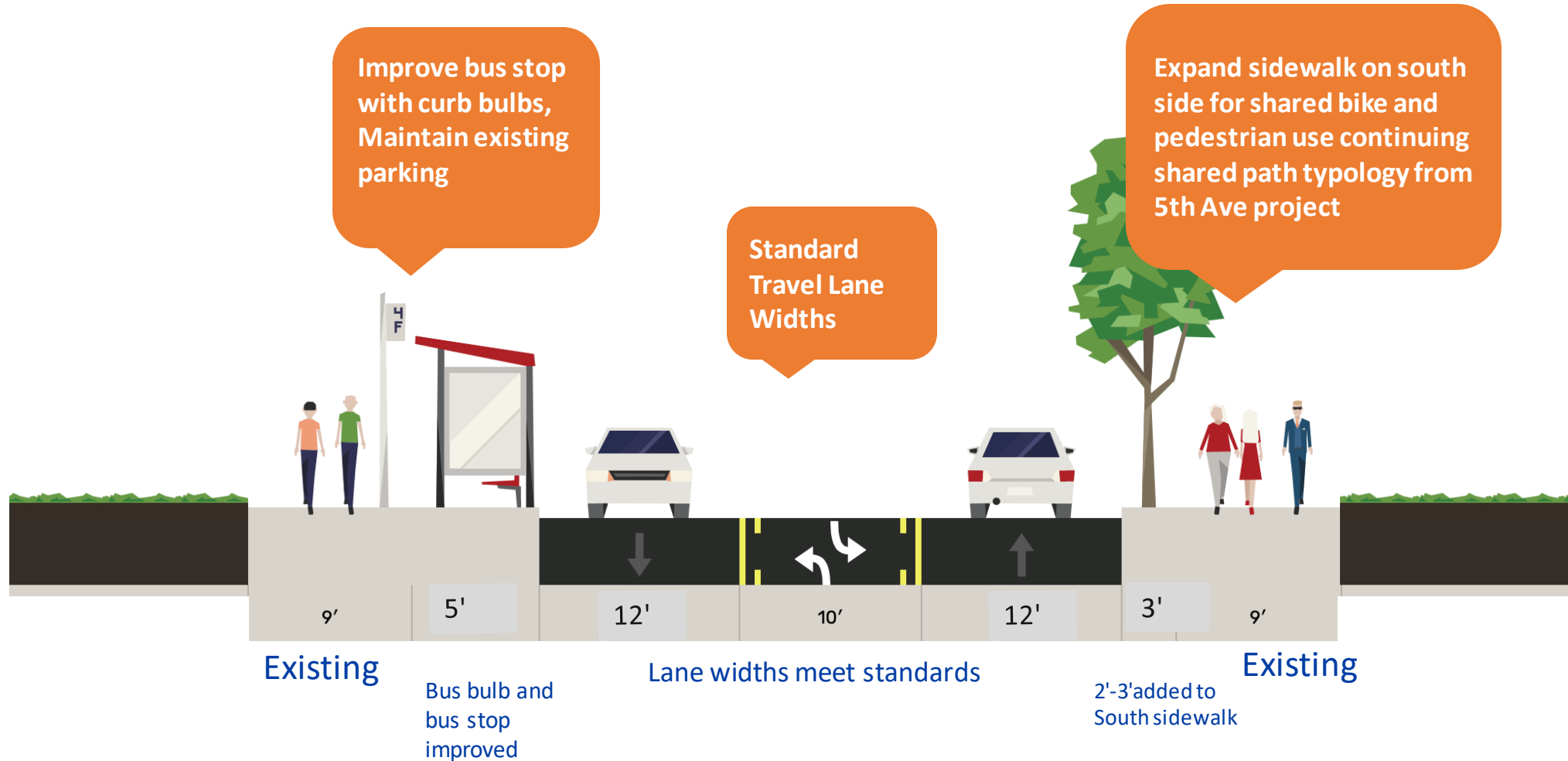
Opportunities



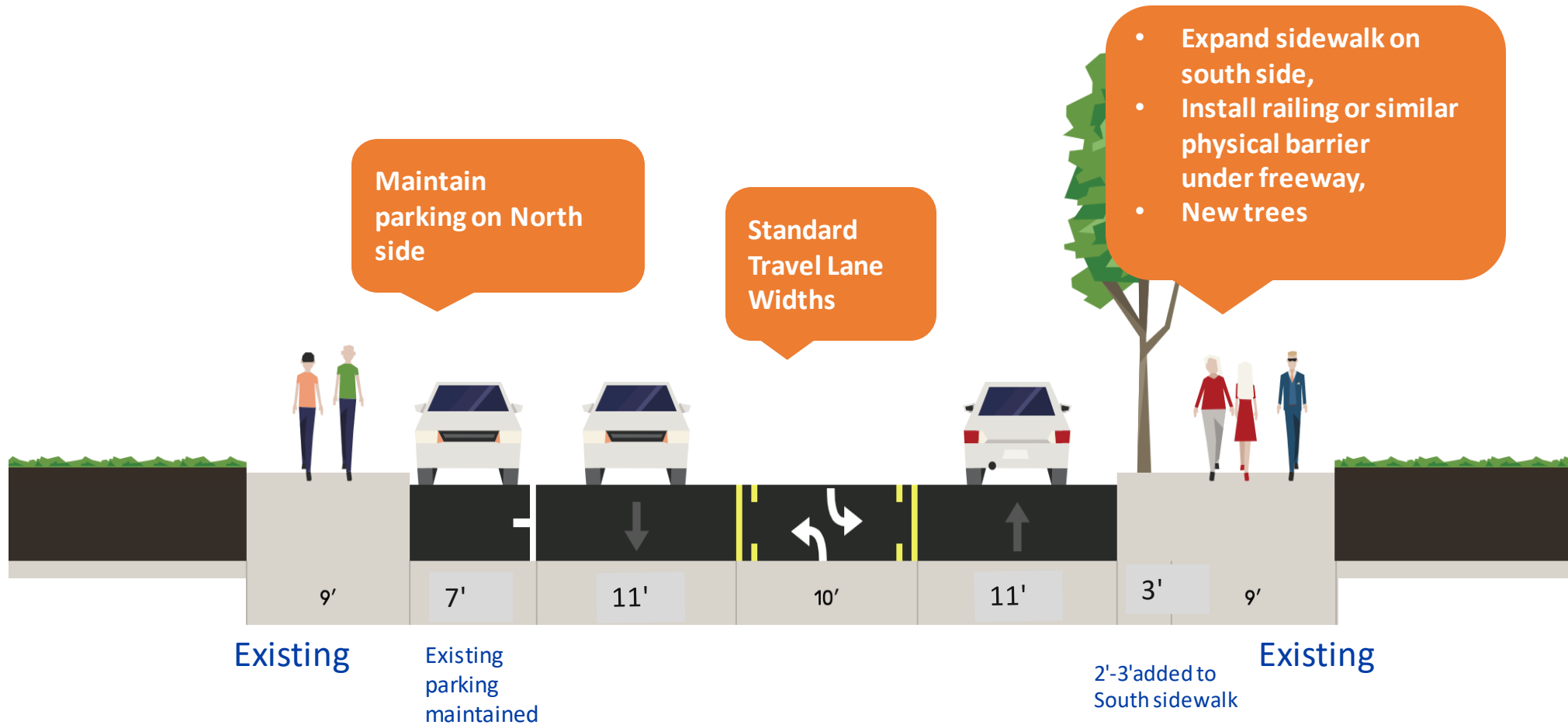
Draft Concepts Menu



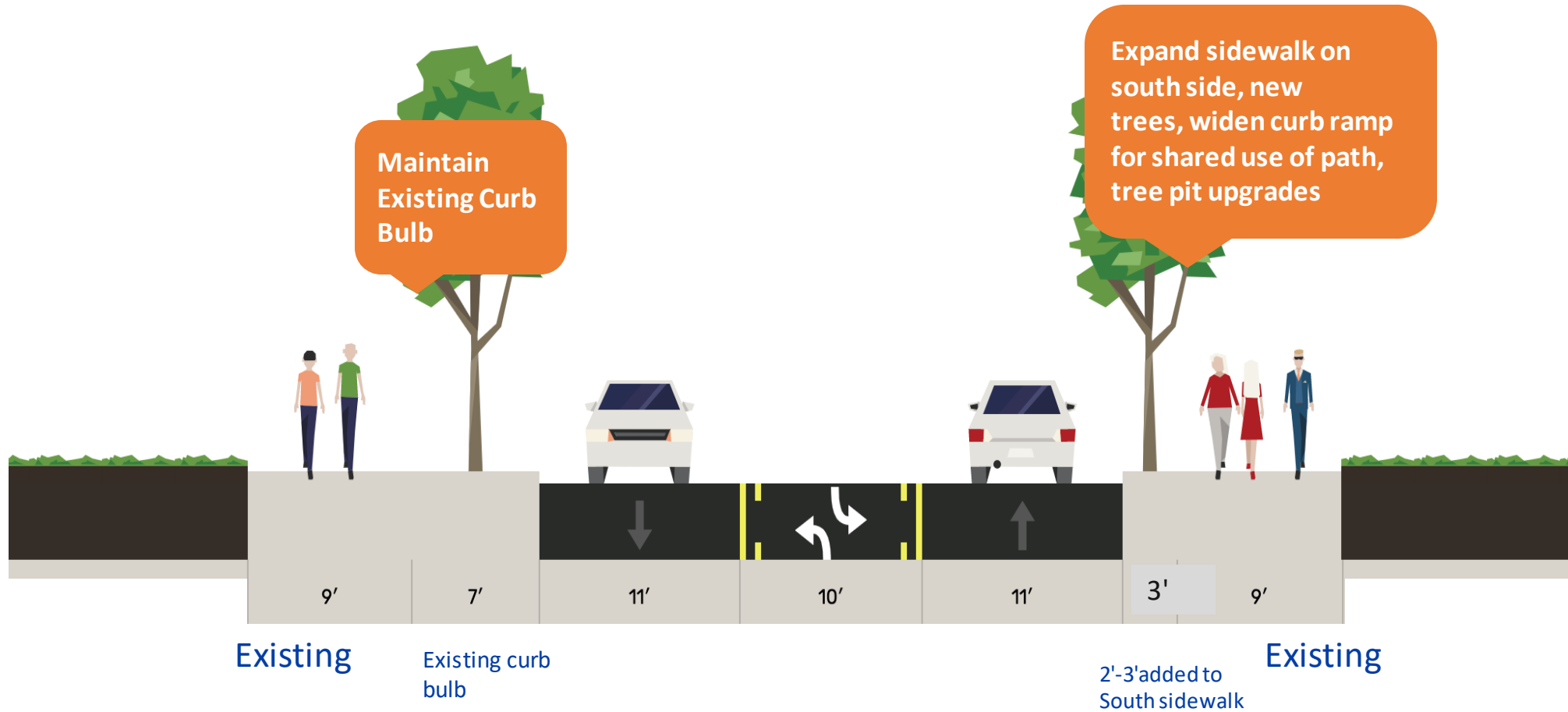
DRAFT Concept - Looking East @ 8th Ave



DRAFT Concept - Looking East under freeway



DRAFT Concept - Looking East @ 7th Ave





Existing - Looking West at 8th Ave S



Existing - Looking East at 7th Ave S



Potential - Looking West at 8th Ave S



Potential - Looking East at 7th Ave S



Discussion

1. **Concepts are draft and need further review from Seattle Fire Department. Final project scope will also depend on the budget and costs.**
2. **What are we missing? Do these improvements address community priorities?**
3. **How would you prioritize the elements in the shared concepts?**
 - a. **Wider Sidewalk**
 - b. **Bus bulb with Shelter**
 - c. **Standard travel lane widths**
 - d. **Concrete Median**
 - e. **Railing or similar physical separation under SR 99**
4. **We would appreciate your suggestions for how to share these ideas with the wider community for feedback**

Next Steps

Date	Activity/action
May-July	Engagement strategy, refine scope and costs, community engagement, coordination with WSB task force
Aug-Sept	Final Scope and Design Development, community engagement
Implementation	To be confirmed

Questions?

aditi.kambuj@seattle.gov | (206) 555-5555

www.seattle.gov/transportation

